

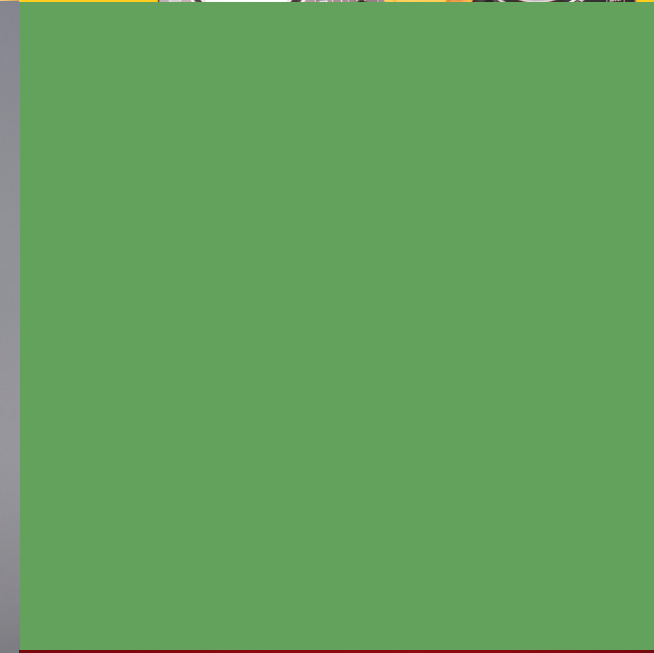
Keeping Your Student Engaged in the Course

Monique A. Major, Ph.D.

m_major@howard.edu

Master Instructor
Department of Psychology
Howard University

August 13, 2023



Agenda

What to expect today



Mindfulness Moment



Recommendations

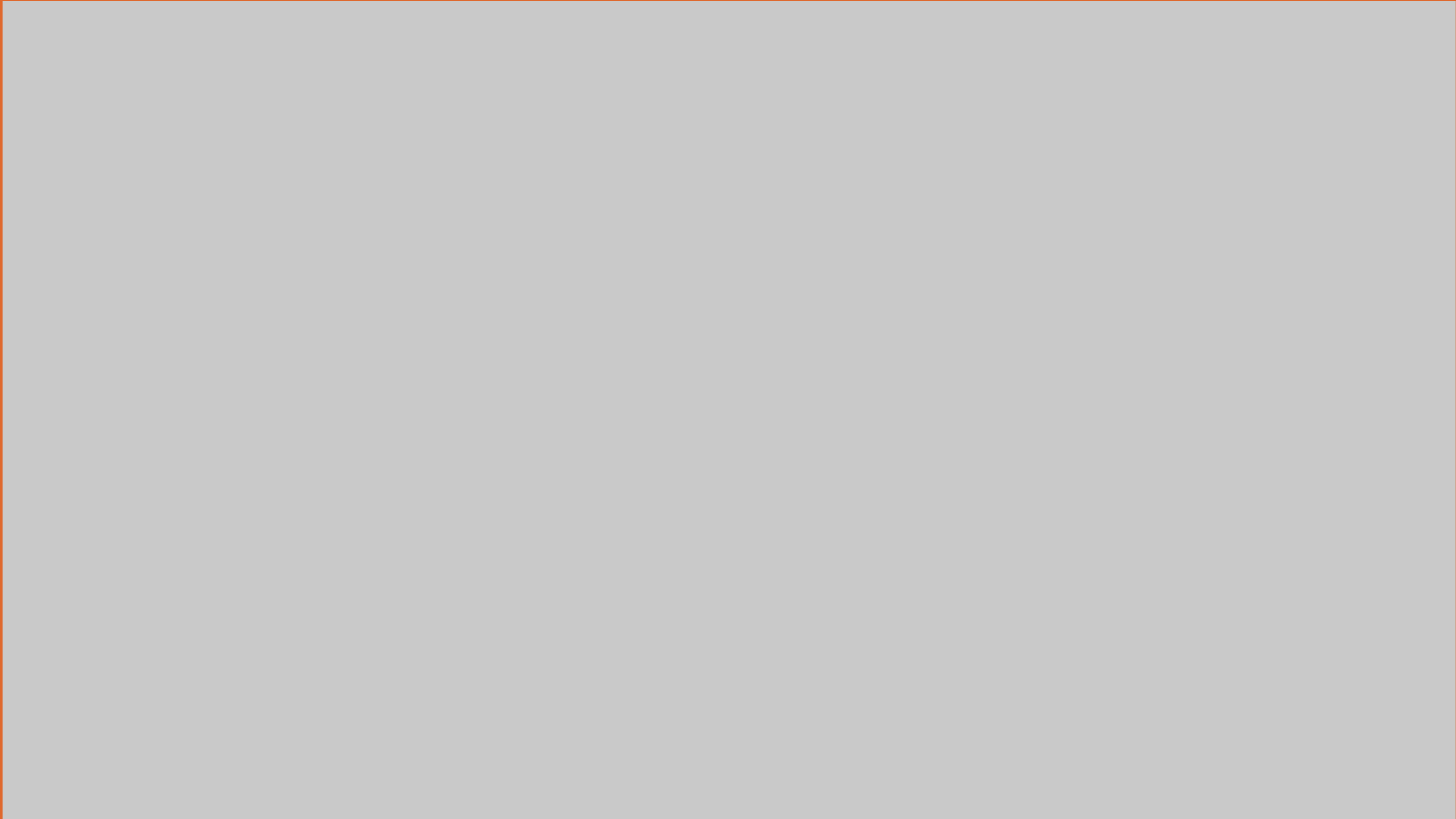


Questions or Comments



MINDFULNESS MOMENT

"Mindfulness means maintaining a moment-by-moment awareness of our thoughts, feelings, bodily sensations, and surrounding environment, through a gentle, nurturing lens."
(Greater Good Magazine, 2023)

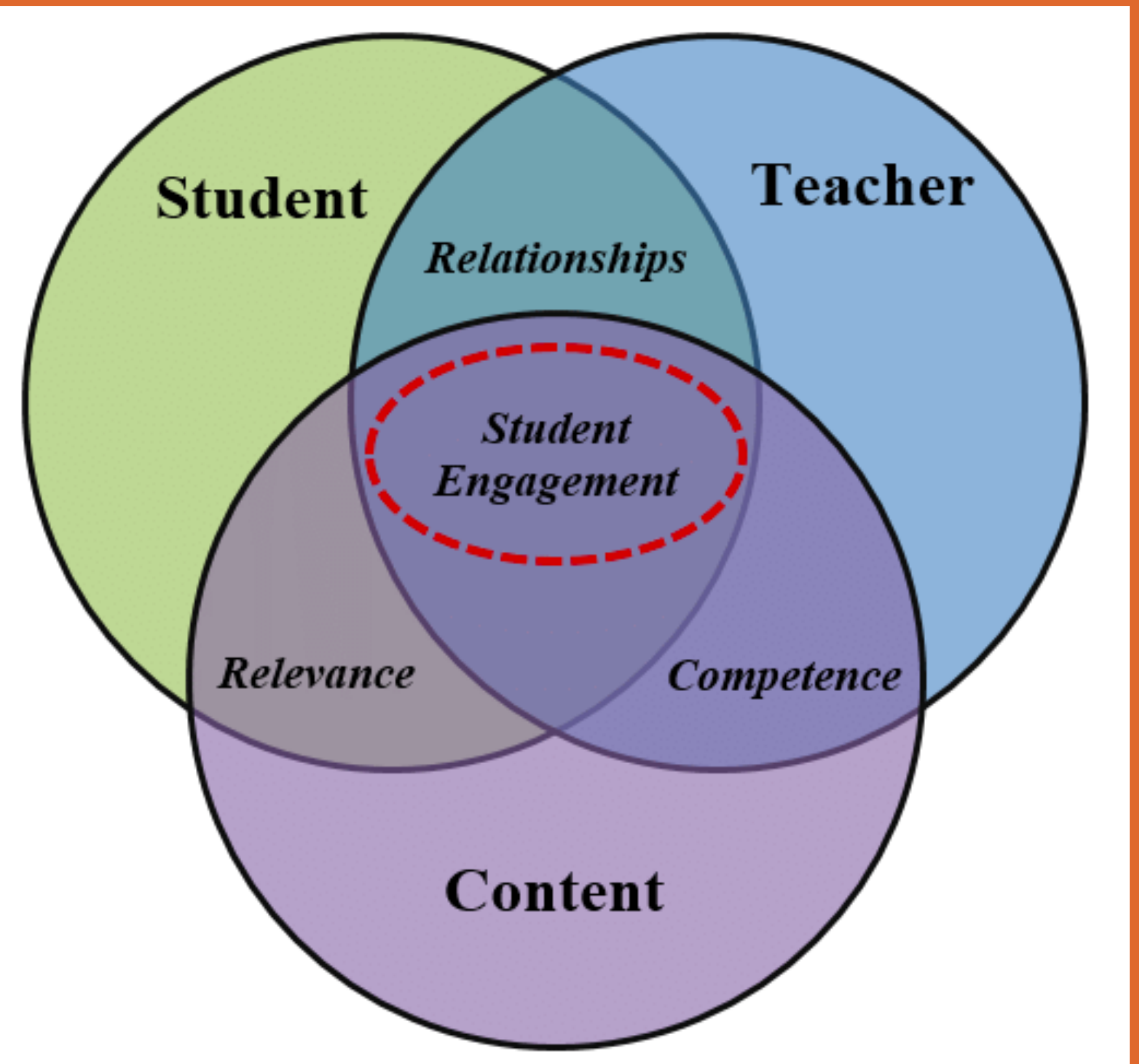


Student Engagement

Behavioral Engagement: attending classes, contributing to class discussions, complying with course policies, time and effort spent studying

Cognitive Engagement: "psychological 'investment' in learning and mastery of academic materials and their desire for challenge" (Davis & Kemptz, 2015, p. 5)

Emotional: Students feelings about their relationships with the teaching staff, peers; general sense of connectedness



**The Student Engagement Core Model
(Bundrick, et al., 2014)**

Teacher Student Relationship



Get to know the Students

Get to know the students in your course

How?

- Use technology to ask the students
- Howard University Office of Institutional Research and Assessment



Get to know your Students



In-class Assignments and Activities

- Online Surveys
 - Longer Versions
 - Qualtrics, Survey Monkey, Google Forms, etc.
 - Shorter Versions
 - Poll Everywhere, Slido, etc
- In-person
 - Have students organize themselves in the classroom based on their answer to your question

Get to know your Students



Homework Assignments

- Assign tasks they will help you learn more about the students and also aligns with the course objectives
- Example from Intro to Psychology Fall 2021:
 - Howard Intro Videos/Creative Work of Art

Know why the students are taking your course

Possible questions to ask your chair or division lead and colleagues

- Is it only offered to majors or minors?
- Is the course a requirement for another department?
- Do students need to pass another course(s) before they can enroll in your course?
- What are the students' attitudes towards the course?

Relevant and Interesting Lectures, Assignments, Activities, and Examples

Lectures and Presentations

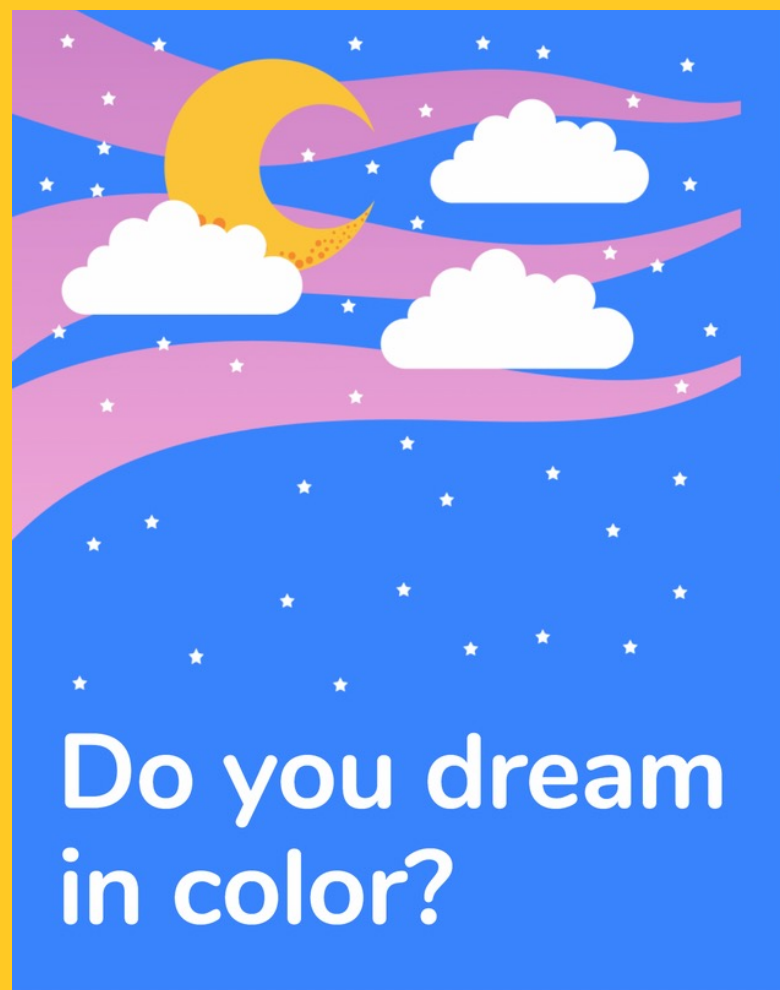
- Microsoft PowerPoint
- Keynote
- Google Slides
 - Slides Carnival
 - Slidesgo
- Canva
- Prezi



Relevant and Interesting Lectures, Assignments, Activities, and Examples

Assignments, Activities, Examples

- Current events
- Culturally relevant examples



Top stories :

News about Alabama, riverside brawl >



BBC NEWS

Tears. Shock. Joy. Why viral Alabama boat brawl matters

1 day ago

CNN

Watch: Montgomery Police seeking man wielding folding chair in Alabama...

2 days ago

Also in the news

NEW YORK POST

Woman charged with assault over viral WWE-style brawl with Alabama...

1 day ago

AP AP News

Men attacked Alabama boat co-captain for 'just doing my job,' he says

14 hours ago

NBC NEWS

Black Montgomery riverfront worker describes what sparked viral brawl

1 day ago



Relevant and Interesting Lectures, Assignments, Activities, and Examples

Call and Response

- Engage by asking questions
- Having large and small discussions



Relevant and Interesting Lectures, Assignments, Activities, and Examples

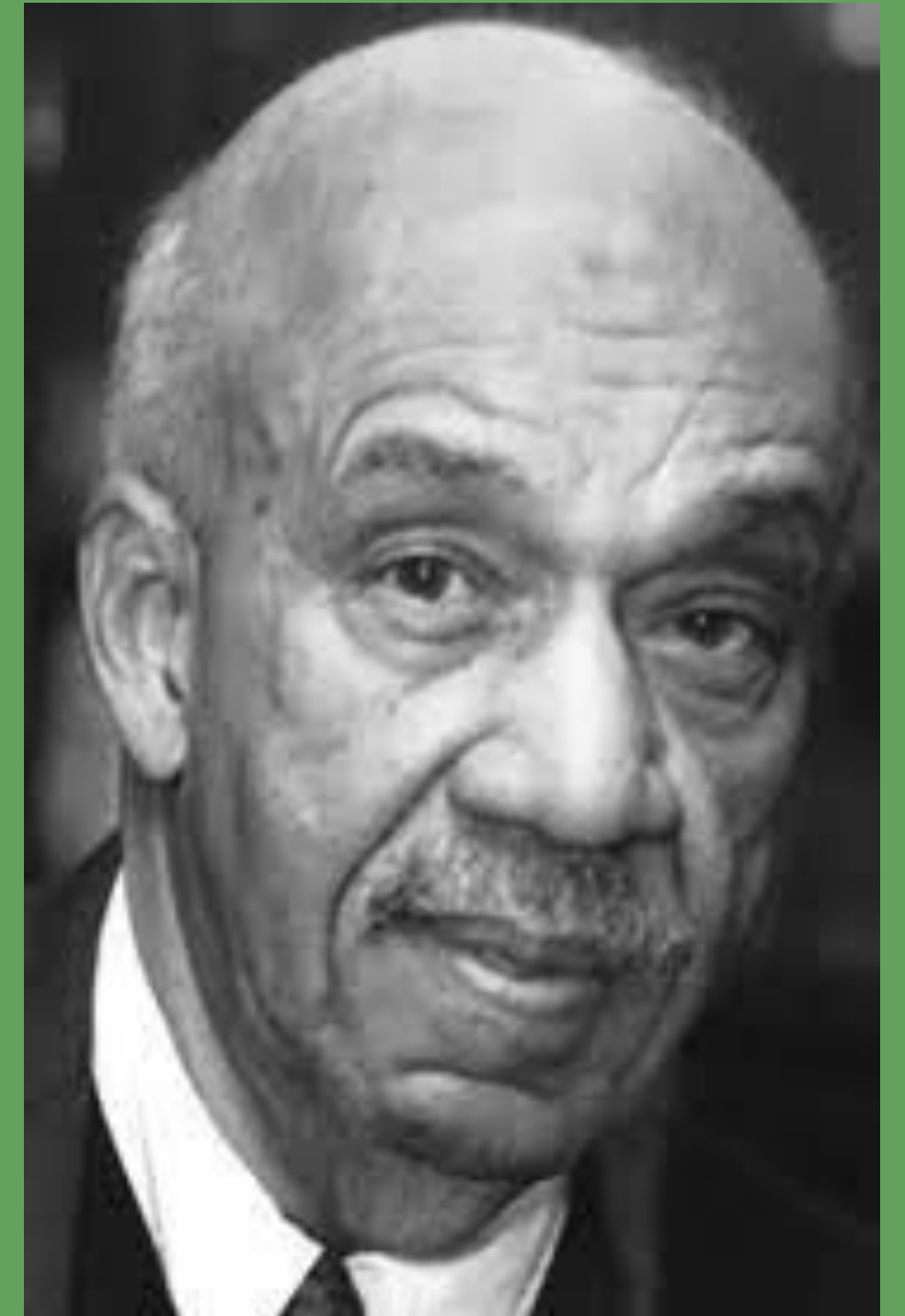
*Humor

- Useful tool for building relationship
- Use caution



Consistency

- Clearly defined course policies and expectations
 - Attendance
 - Participation
- Show up
- Arrive on time
- Spend time with the students and on campus



Dr. Leslie H. Hicks

Genuinely Care

LEARNING

+

WELL-BEING

- CETLA
- Teaching workshops and trainings

- Health Center
- Counseling Center
- Others

**Questions?
Comments?**

